

PARKSIDE

HERMANN PARK CONSERVANCY NEWSLETTER

- 1 Conservancy Volunteers Make a Difference in Hermann Park
- 2 From the Executive Director
- 3 New Board Members
- 4 Run in the Park
- 5 Happy Birthday George Hermann!
Urban Green Spring on the Green
- 6-7 Evening in the Park
- 8 ExxonMobil and Shell Summer Interns
New Exercise Equipment
- 9 Featured Plant
Remembering Jesus Bautista Moroles
- 10 Events Calendar

in the park

Conservancy Volunteers Make a Difference in Hermann Park



Job Shadow students help recruit new Conservancy members



Youth help maintain Whistlestop Prairie



McGovern Centennial Garden volunteers lay pine straw



EVENING IN THE PARK
see pages 6-7

MISSION
Hermann Park Conservancy is a citizens' organization dedicated to the stewardship and improvement of Hermann Park—today and for generations to come.



Take a look around Hermann Park and you might spot Conservancy volunteers weeding flower beds in Lake Plaza, planting trees in Bayou Parkland, or greeting guests in the McGovern Centennial Gardens. Volunteers are at the core of the Conservancy's mission to maintain and improve Hermann Park. It is heartwarming to see our community taking part in the stewardship of the Park, whether it is mulching plant beds, watering trees, repairing trails, or volunteering at a special event.

In the McGovern Centennial Gardens, volunteer coordinator Kimina Jamison organizes the efforts of volunteers who devote their time to gardening tasks or

serve as garden ambassadors to assist visitors. Volunteer Meredith Hilliard said of her experiences in the garden, "After spending countless hours a day inside an office, it is so refreshing to be able to spend time outside and really get your hands dirty." Many other volunteers share this same feeling or live in an apartment where they are limited in their gardening possibilities. Amy Sullivan, a garden ambassador, had a meaningful conversation with a visitor and said, "... one person comes through the gardens after every run just to sit and relax before heading home. People are really taken by the design and the ability to just sit and enjoy."

Continued on page 4



Honorees Phoebe Tudor and Ann Kennedy with Doreen Stoller

Rarely do friends inspire poetry — but a simple “thank you” did not seem adequate when we honored Phoebe Tudor and Ann Kennedy at *Evening in the Park*. Despite my best efforts, the “Ode to Phoebe and Ann” could not compare to the beauty of the surrounding McGovern Centennial Gardens — a far more poetic testament to their efforts.

Ann’s love for Hermann Park goes back 25 years, when she first brought her young son for train rides (hundreds of them). Over the years, she became a Park advocate and has served as a Conservancy board member since 2007. Board chairs typically serve one two-year term — but her leadership up to the Centennial led the board to press her for a second term (2010 to 2014). Trying to plan a Centennial in the shadow of the 2008 financial downturn led to conversations such as, “well, we can just serve cupcakes and everyone will enjoy the party.” Yet Ann’s determination helped bring about the many successful Centennial events from *Art in the Park* to the *Hermann Park Kite Festival* and the *Park to Port Bike Ride*. It was hard to think of a way to thank her enough when her term as chair ended, but her son Alec recorded a video testimonial from Stanford and then surprised her with an appearance at our final board meeting. Many of her family members and friends joined us to celebrate her at the gala.

Hermann Park has long been close to Phoebe’s heart as well. She first joined the board of Friends of Hermann Park (now Hermann Park Conservancy) in 1999, serving in many positions throughout the history of the organization. With a Master’s degree in historic preservation, Phoebe was drawn to restoring the elegant core of Hermann Park. And, after living in New York City with three small children in the ‘90s, she knew what Central Park meant to so many families. When she returned, she was inspired to rescue Hermann Park so Houston families would have a beautiful place to spend time together. Phoebe chairs the Centennial Campaign committee and will be the next chair of the Conservancy board. She has been tireless in her efforts to raise funds to improve Hermann Park and bring the McGovern Centennial Gardens to life.

I encourage everyone to take a walk to the top of The Mount and enjoy the view. When you do, please take a moment to thank Phoebe and Ann for their hard work. The Conservancy team thanks them for their kindness. We, and the Park, couldn’t have better friends.

See you in the Park,

Doreen

Doreen Stoller, Executive Director

DONORS

McGovern Centennial Gardens

\$10,000 – \$24,999

Alene Ross Levy
Jane and Gary Swanson
Terrie and Win Warren

\$1,000 – \$4,999

Ann Kennedy and Geoffrey Walker
Johnny Steele – In honor of
Cherie Flores Garden Pavilion
Doreen Stoller and Dan Piette

\$100 – \$499

Sara and Jim Ledbetter –
In honor of Jane Curtis
Judy and Scott Nyquist –
In honor of Celine Rebecca David
St. Luke’s United Methodist Church
Kaylin Weber – In honor of
Michele and Brent Friedman

In Kind

Greenleaf Nursery Company

Centennial Campaign

\$100 – \$2,000

Lynn and Jary Glazer –
In honor of Carolyn Robertson
Zach Russell

Japanese Garden

\$5,000 – \$9,999

Merle Hunsaker –
In honor of Miwa Sakashita
Strake Foundation

\$1,000 – \$4,999

Japan Business Association of
Houston (JBAH)
The Japanese Association of
Greater Houston (JAGH)

\$100 – \$499

Consulate General of Japan
Sis and Hasty Johnson –
In honor of Francoise Djerejian
The Way of Tea Houston

Art in the Park

\$5,000 – \$9,999

Brad and Leslie Bucher – In support of
the Yinka Shonibare installation
Judy and Scott Nyquist

Evening in the Park

*All gifts in honor of Ann Kennedy and
Phoebe Tudor, honorees, and chairs
Linsay and Jeremy Radcliffe and
Allison and Troy Thacker.*

\$25,000 – \$49,999

Camden
Cherie and Jim Flores
Kathrine G. McGovern/
McGovern Foundation
Allison and Troy Thacker
Phoebe and Bobby Tudor

\$10,000 – \$24,999

Chinhui Juhn and Eddie Allen
Melina McCarty Bishop and
John Champion Bishop
Janet F. Clark

H-E-B

Linda and George Kelly
Devin and Ryan McCord/
Generation Park
Palmetto Partners, Ltd./The Robert
and Janice McNair Foundation
Petrello Family Foundation
UTHealth
Kim and Chuck Yates

\$5,000 – \$9,999

Julie and Griff Aldrich/
Heidi and Marcus Smith
Andrews Kurth LLP
Baker Botts L.L.P./
Isabel and Danny David
Jay Baker
Kristy and Chris Bradshaw/
Jen and Steve Dolman
Marianna and Chris Brewster
Anne and Albert Chao
Cathy and Paul Chapman
Anne and John Clutterbuck
Susie and Sanford Criner/
Cece and Mack Fowler
Jane and Bill Curtis/
Curtis & Windham Architects
June Deadrick/CenterPoint Energy
Linnet F. Deily
Michele and Brent Friedman/
Friedman Foundation
Christine and Gregg Hollenberg
Linda and Barry Hunsaker
Ann Kennedy and Geoffrey Walker
Margaret L. Kripke and Isaiah J. Fidler
Tommy W. Lott
Joella and Steve Mach
Nancy Manderson
Rebecca Mark-Jusbasche and
Michael Jusbasche
Colby Martin/Carolyn and
Chris Dodson
Mithoff Family Foundation
Linsay and Jeremy Radcliffe
Rice University
Carolyn and James Robertson
Lillie Robertson
Leslie and Shannon Sasser
Barbara and Louis Sklar
Christina and Jan Spin
Carmen Thompson

\$1,000 – \$4,999

Dorothy and Mickey Ables
Siva and Teddy Adams
Anonymous
Natalye Appel and John Casbarian
Lee and Bob Ardell
Jana and John Scott Arnoldy
Susan and Jim Baker
Rhonda and Byron Barclay
Mary and Marcel Barone
Gina and Devinder Bhatia
Ting and John Bresnahan
Robin and Richard Brooks
Divya and Chris Brown

The Conservancy Welcomes New Board Members



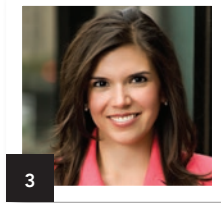
1

1. **Robert Antablin** is a member of Kohlberg Kravis Roberts & Co. and a senior leader of the firm's Energy and Infrastructure team focusing on Energy Private Equity. He also serves on KKR's Oil and Gas Investment Committee. Previously, he worked for Goldman Sachs in the investment banking division in New York. Robert holds a B.S. (Phi Beta Kappa) from the Schreyer Honors College of Pennsylvania State University. He and his wife Abbi live in Shadyside with their two children.



2

2. **John Bishop** is a managing director at Morgan Stanley in the Global Natural Resources Group. He leads the firm's global coverage efforts pertaining to the oilfield services sector and regarding select North American upstream clients. John joined Morgan Stanley in 2012 and has 14 years of oil and gas investment banking experience. He and his wife Melina have two children.



3

3. **Gloria Luna Bounds** is a program manager in Corporate Community Relations for CenterPoint Energy, and serves as the company's United Way Campaign Coordinator. She earned her B.A. in Communication and an MBA from the University of St. Thomas. Gloria is an active member of the Junior League of Houston, serves on the board for the Latin Women's Initiative and serves on the HISD Hispanic Advisory Committee.



4

4. **Anne Schlumberger** serves as a trustee for the Museum of Fine Arts, Houston and the Menil Collection, and is on the advisory board of The Houston Seminar. In 1980, Anne founded the Anchorage Foundation of Texas and in 1994 she co-founded Making Main Street Happen. She has served as past president of Rice Design Alliance and has been on the board of directors of many local organizations including Houston Tomorrow, Houston Grand Opera, and The Children's Museum.



5

5. **Y. Ping Sun** moved from New York to Houston in 2004 when her husband David W. Leebron became president of Rice University. A native of Shanghai, China, she received a scholarship to Princeton University where she graduated with an A.B. degree before receiving a law degree from Columbia University School of Law. She is currently of counsel with the law firm of Yetter Coleman LLP and serves as a representative of Rice University, sitting on the advisory board of Rice's Shepherd School of Music and the Kinder Institute for Urban Research.

*Welcome to the newest members of
the HPC board of directors!*



Conservancy Volunteers Make a Difference in Hermann Park

Continued from page 1

The Conservancy's summer Job Shadow program, led by director of volunteer programs, Diane Kerr, gives junior high and high school students a unique opportunity to learn about the importance of conservation. Students participate in a variety of work-related tasks and team-building activities while learning about horticulture and forestry and connecting with nature. Student Pablo Schnelle noted one important lesson he learned, "We must conserve native species and remove invasives in order to sustain a healthy environment not only in Houston, but the world."

Working through this summer's high temperatures, the youth helped to clean up the Park in the aftermath of May's heavy rains by repairing eroded trails, removing weeds in flower beds, and picking up limb debris. This summer's enthusiastic group not only helped to improve Hermann Park but also gained valuable skills for the future.

To find out more about volunteering as an individual or a group, visit our website at hermannpark.org/volunteer, or call **713-524-5876** ext. 332. And, if you see a volunteer out in the Park, stop and thank them for helping to keep Hermann Park clean and green.

Run in the Park 2015

Always a fall favorite, Hermann Park Conservancy's *Run in the Park* will be held on **Saturday, November 14, 2015**. The 12th annual event will feature a 5K Run/Walk, a Kids' Fun Run, and a celebratory post-race party. The race begins at Hermann Park's Molly Ann Smith Plaza and winds throughout the Park on the Marvin Taylor Trail. The 5K run will be chip timed and the overall male and female winners will receive awards. For more details, go to hermannpark.org/run.



- Cindy and Larry Burns
- Catherine Callaway and Brian James
- Gracie and Bob Cavnar
- Jereann Chaney
- Chevron
- Mary and Mark D'Andrea/
Gulf Coast Oncology Associates P.A.
- John Dazey and Vernon Walling
- Viviana and David Denechaud
- Clare and Jim Doyle
- Consuelo Duroc-Danner
- Michol and Michael Ecklund
- Diane Lokey Farb
- Harriet and Joe Foster
- Ellie and Michael Francisco
- Farzanah and Lissa Gangjee
- Morgan and Patrick Garvey
- Maureen and Geoff Goddard
- Kathy and Marty Goossen
- Melanie Gray and Mark Wawro
- Mary Ann and Joe Harper
- Diana and Russell Hawkins
- Sheila and Ron Hulme
- Melanie and Blake Hutchinson
- Evelyn and Robert Jewell
- Kathleen and Mike Johnson
- Sis and Hasty Johnson
- Marianne and Rob Jones
- Gaye and John Kelsey
- Betty and Jim Key
- Jennifer and JC Kneale
- Cathy and John Lawrence
- Legacy Community Health/
Katy Caldwell and Chree Boydston
- Earl L. Lester, Jr.
- Phuong and George Levan
- Nancy and Erik Littlejohn
- Marley Lott
- Elizabeth and Jason Love
- Jackie and Malcolm Mazow –
In memory of June Lott
- Anne and John Mendelsohn
- Denise Monteleone and Jim Martin
- Candace and Scott Mullervy
- Angelica and Ramzi Nassar
- Terrylin Neale and Dick Dalton –
In memory of Erin Gregory Neale
and Lamar Gregory Neale
- D. Patricia Nelson
- H. Joe Nelson III
- Erin and Eric Otness
- Precious and Ore Owodunni
- Beth and Jim Patterson
- Mary and Ben Patton
- Gary Pittman
- Dean Putterman
- Noelle and Eric Reed
- Kim and Chris Reichert
- Chris Ritchie
- David Enrique Ruiz
- Jennifer and Justin Segal –
In honor of The Segal Family
- Cathryn and Douglas Selman
- Karla A. Sepulveda

Hinda Simon
 Cassie B. Stinson
 Doreen Stoller and Dan Piette
 Elizabeth Strelow and Neil Gross
 Kim and Dan Tutcher
 Karen Twitchell and Kirk Heyne
 L. Burke Windham III
 Lisa and Dennis Woods
 Lorraine and Ed Wulfe
 Beth and Nick Zdeblick

\$500 – \$999

Nancy Ames and Danny Ward
 Jeff Beauchamp
 Jackson Chang
 Debra and Stephen Costello
 Marita and J. B. Fairbanks
 Thomas Kirk
 Carla Knobloch
 Amy and Gentry Lee
 Daniel Lee
 Philippe Licausi
 Tom McGee
 Vance Muse
 Judy and Scott Nyquist
 Kathleen O'Reilly
 Allie and Dave Pruner
 Perry Ann and John Reed
 Ed Smith
 Lois and George Stark
 John Tobola
 Jim Vesterman
 Lea Weingarten
 Gayla Wetz
 Barbara E. Williams
 Jeanie Kilroy Wilson and
 Wallace S. Wilson

\$100 – \$499

Andrea and Kensley Barrett
 Cathy and Gary Brock
 Suzanne Coppola
 James Davidson
 Jane and Gus Eifler
 GG Goddard
 Harriet and Truett Latimer
 M. Jerome Lewis
 Robert Licato
 Kathy and Tom Lord
 Mary Lynn and Steve Marks
 Jules Moore
 Stephen Naehr –
 In honor of Aariya and Juwon
 Margaret Ortega
 Genevieve and Shawn Patterson
 Sarah and David Pesikoff
 Catherine and Gerardo Rivera –
 In honor of R. Nicholas Rivera
 Marjana and Hal Roach
 Candice and Lonnie Schiller
 Rachel and Sebastien Solar
 S. Shawn Stephens and
 James M. Jordan
 Gretchen Vaughan

Happy 172nd Birthday, George!

Despite the nearly 100 degree temperature, kids flocked to Kinder Station on August 6 to celebrate the birthday of our Park's namesake, George Hermann. The youngsters enjoyed coloring and crafts, face painting, and birthday cake. The Houston Fire Department taught fire safety through a musical puppet show and two mounted Houston Police officers talked to children about their work. The party wasn't complete without a ride on the Hermann Park Railroad, discounted to \$1.72 in honor of Hermann's 172nd birthday.



Kids enjoyed a fire safety puppet show.



Crafts were a big hit at the party.

Urban Green Celebrates Spring on the Green

Topper Sheehy, Brittany Ringel, Glynn Tower and Rachel and David Fein

Celebrating the splendor of the McGovern Centennial Gardens was the theme of the night when 400 young professionals came to Hermann Park on May 7. Guests enjoyed generously donated food and beverages while DJs Mav and M-Cue kept the music going. Many took photos with their friends in a Ham & Cheese photobooth, bid on exciting silent auction items, and explored the gardens. Event chairs Rachel and Daniel Fein, Topper Sheehy, and Glynn Tower and the Urban Green steering committee led by Catherine Bradley helped ensure the event would

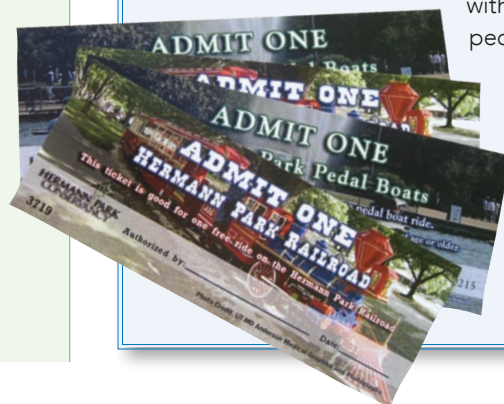


Andrew Richardson Photography

raise vital funds to benefit Hermann Park. The successful event brought in \$25,000, more than doubling its goal.

Join the Conservancy

Are you a Hermann Park Conservancy member? Hermann Park membership raises vital funds that ensure the Conservancy can continue to care for the 445 acres of Hermann Park. Membership dollars buy gloves, tools, equipment, and time, all required to maintain the Park on a daily basis. Membership also comes with great benefits! Members receive train and pedal boat tickets and have access to Member Express lines. On weekends and busy weekdays, members can skip the line! Members also ride for free on the second Saturday of every month. To see the full list of benefits, visit hermannpark.org/membership.



Play your Park and become a member today!

AN *Enchanted* EVENING IN THE PARK

Guests were delighted to celebrate the April 24, 2015 *Evening in the Park* gala in the McGovern Centennial Gardens for the first time. While some sipped cocktails on the plaza of the new Cherie Flores Garden Pavilion, others explored the gardens and strolled to the top of The Mount for a panoramic view. Chairs Linsay and Jeremy Radcliffe and Allison and Troy Thacker planned a truly spectacular evening for more than 500 guests dressed in summer whites. The Conservancy honored two extraordinary women that have been long time Park advocates, fundraisers, and philanthropists: Ann Kennedy, past Conservancy board chair, and Phoebe Tudor, Centennial Campaign chair. Following dinner by City Kitchen on the garden's Centennial Green, guests enjoyed an impressive dessert bar and then danced into the night to the music of KlockWork. The event raised more than \$525,000 to benefit the Conservancy.

Thank you to everyone who supported this special evening benefiting the Conservancy.



1



2



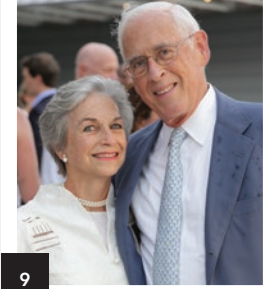
6



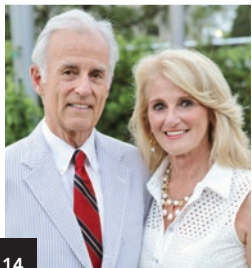
7



8



9



14



15



16



17



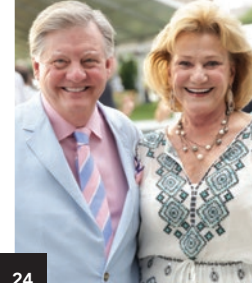
21



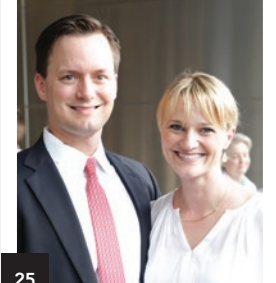
22



23



24



25

HERMANN PARK CONSERVANCY



3



4



5



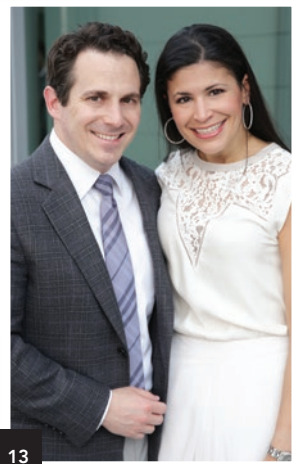
10



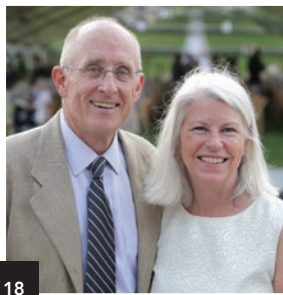
11



12



13



18



19



20



29



26



27



28

1 Chairs Jeremy and Linsay Radcliffe and Allison and Troy Thacker 2 Honorees Phoebe Tudor and Ann Kennedy 3 Andrea and Bill White 4 Albert and Anne Chao 5 Sis Johnson, John Gaston and Cindy Bishop 6 Josh Fidler and Margaret Kripke 7 Dick Dalton and Terrylin Neale 8 Gracie Cavnar and Kim Tutcher 9 Anne and John Mendelsohn 10 Kim Campo Hartz, Mo Campo, Phoebe Tudor and Ric Campo 11 Anne and John Clutterbuck 12 Gregg and Christine Hollenberg 13 Chris and Kristy Bradshaw 14 John Martin and Denise Monteleone 15 Marley Lott and Joe Turner 16 Danny and Isabel David 17 Bobby and Phoebe Tudor and Scotty and Jana Arnoldy 18 Bob Suchecki and Janet Clark 19 Cece and Mack Fowler 20 Don and Ginger Teague and Barry and Linda Hunsaker 21 Sanford and Susie Criner 22 Mickey and Dorothy Ables 23 Van Ngo and David Ruiz 24 Jimmy and Carolyn Robertson 25 Patrick and Morgan Garvey 26 Chinhui Allen, Rhonda and Byron Barclay 27 John and Melina Bishop 28 Kensley and Andrea Barrett 29 Mark Sullivan and Diane Lokey Farb 30 Natalye Appel and John Casbarian, Jay Baker and Kathleen O'Reilly



30

ExxonMobil and Shell Interns Spend Summer Working at HPC

This summer two college interns worked diligently to complete valuable projects and learn about the operation of a non-profit organization. Both students had fond childhood memories of Hermann Park and embraced the opportunity to spend eight weeks with the Conservancy.



Jillian Mitchell, a junior at St. Edwards University, was sponsored through ExxonMobil's Community Summer Jobs Program.

She compiled an inventory and mapped the Park's native trees, developed an invasive species removal plan, and worked with volunteers.



Christopher Wong, a senior at Prairie View A&M University, was sponsored by Shell. He developed plant databases for the new McGovern

Centennial Gardens and for the Japanese Garden and created a comprehensive plant guide for both gardens on the Conservancy website. Chris also facilitated volunteer projects in the gardens.

We are grateful for their hard work this summer and enjoyed getting to know both of them. We are thankful to ExxonMobil and Shell for their continued annual support of these valuable internship programs.

New Exercise Equipment for Hermann Park



Joggers and walkers are enjoying the new workout station along the Marvin Taylor Trail. The exercise equipment is located behind the Conservancy office at 1700 Hermann

Drive and provides a variety of TimberForm Fitness Route conditioning stations. It's a perfect way to get an extra workout along the trail.

DONORS

Chris Wilson –
In honor of Margaret Langley
Wolff-Toomim Foundation

In Kind
Alvin Tree Farm
City Kitchen Catering
Neiman Marcus Houston
Texas Monthly
TPRB Advertising
Ermenegildo Zegna
Houston Boutique

Annual Fund/ General Fundraising

\$10,000 – \$24,999

Tiffany and Senthil Alagarsamy –
In memory of Varasamy Alagarsamy
Pippa Wiley

\$1,000 – \$4,999

Beverly and Dan Arnold
Lucia Benton
Sudha Bidani
Harry S. & Isabel C. Cameron
Foundation

Nancy and Pete Etheridge
Sharon and Cecil Griffin
Marilyn G. Lummis
Ludmilla Orelup

Alisa and Gary Porter
Isla and Tommy Reckling
Robert C. Robbins, M.D.
Karen and Howard Schneider
Ellen C. L. Simmons

\$500 – \$999

Janie and Richard Beeler
Virginia Elkins
Harriet and Joe Foster
Ann and J. Kent Friedman
Ann and Thomas Kelsey
Linda and Thomas Kleinworth –
In honor of Ron Misrack
Sandra and George Mason
Ann and Eddie Norwood –
In memory of Dick Dalton
Michele Thompson and Bob Yekovich –
In memory of Marcella Johnson
Maggie and Rob Vermillion

\$100 – \$499

Anonymous
Sarah and Burt Ballanfant
Karen and Rick Bell –
In memory of Sue Hardwick
Jane Block
Nancy and Patton Breland
Don Brenner
John D. Carrara, Jr.
Jan and Joe Castleberry
Chevron Matching Employee Funds
Barbara K. Chiles
Kathryn and Hank Coleman
Lisa and Pete Coppel
Cynthia Coselli
Lisa and Mark Cox

McGOVERN CENTENNIAL GARDENS

featured plant

Jennifer and Steve Dolman –
 In memory of Dick Dalton
 Susan M. Edwards
 Halliburton
 Susan and Frank Hawkins
 Lynn and Bill Herbert
 Steppie and Robert Holsclaw
 Vicki Huff and Eric Boerwinkle
 Jay Hurt
 Jay Jones
 Sultana Kaldis
 Nicole and Evan Katz –
 In honor of Elliott and Leo David
 Wendy and Mavis Kelsey, Jr. Fund
 Anne Klein and Harvey Aronson
 Kathryn Louie
 Lucy Lunt and Wayne Donowho –
 In honor of Marley Lott
 Kathleen and Thomas Mach
 Jerry McNeill
 Pete and Irving Schweppe
 Leanne and Sam Scott
 Shell and Motiva Employee
 Giving Program
 Carol and William Simmons
 Louis H. Skidmore, Jr.
 Arlene and Joe Staller
 Nancy and Peter Thompson
 Janae Tsai
 Connie and Tom Vargo
 LB Wallace
 Candace and David Weinstein
 Laurie Williams
 Crystal and Randall Wright
 Amber and Byron York
 Susan Young

In Kind
 Aries Operating LP
 Thomas Klettke
 Texoz EZPI, Inc.

General Endowment Fund

\$1,000 – \$4,999

James Nutaitis

\$100 – \$499

Tommy Le

Reforestation and Maintenance

\$10,000 – \$49,999

Friedman-Kline Family Foundation
 Shell

Plant a Tree

\$100 – \$499

Beverly Dickerson – In memory of
 Mr. E. William Bradshaw
 Peggy and Brad Holmes – In memory
 of Catherine Egan Goetzke
 Houston Museum District Association –
 In honor of Christine Jelson West
 Shelly and David Katz –
 In honor of Eliza and Cecilia Friedman
 Douglas Lawing and Guy Hagstette –
 In honor of Jim Murdaugh and
 Gary Smith



Agave ovatifolia (Whale's Tongue Agave)

There are eight species of agave located in the Arid Garden, but one particular favorite is the Whale's Tongue Agave. A drought-tolerant selection, it has responded well to moderate irrigation and is flourishing on our gravelly, well-draining beds in full sun. This agave is a solitary, non-offsetting succulent with a rounded rosette of short wide gray leaves that are distinctively concave.

It grows from 2 to 5 feet tall by 3 to 6 feet wide. The leaves have small teeth along their margins and a one inch long dark gray terminal spine. The roots of the name 'ovatifolia' come from the Latin 'ovatus', for egg, and 'folius', for leaves, describing the distinct egg or ovate-shaped leaf. Whale's Tongue Agave provides a focal point in an arid garden, the silvery tone catching the eye.

Remembering Sculptor Jesus Bautista Moroles (1950 – 2015)



Moroles' Moonscape
 Bench in Hermann Park.

If you have ventured across McGovern Lake from Lake Plaza and Kinder Station to the quiet side of the lake edge, you probably encountered a unique granite sculpture called *Moonscape Bench* by the late Texas artist Jesus Bautista Moroles. This popular sculpture was generously given to the City of Houston by the late Jack Blanton and has called Hermann Park home since 2002. If you're lucky enough to find it empty, you can lounge comfortably on the sculpture and take in the beautiful views across McGovern Lake.

The Texas art world lost a legend in June when Moroles was tragically killed in a car accident outside of Austin. A native of Texas who lived and worked in Rockport, Moroles was an internationally renowned master sculptor well-known for his large scale abstract granite works. He was the recipient of the National Medal of Arts in 2008 and his sculptures can be seen across the world – although he never lost his love and connection to Texas.

Save the Dates! Hermann Park Conservancy Calendar of Events for Fall 2015



Park to Port Bike Ride
Saturday, October 3, 2015
7 a.m.



Urban Green Fall Event
November 19, 2015
7–10 p.m.






Run in the Park
Saturday, November 14, 2015
8 a.m.



**Student Performances
in the Park Series**
Throughout the 2015–2016
school year

*Dates and times are subject to
change; where date and time
not listed, exact time is TBD*

Details at
hermannpark.org

-  facebook.com/HermannPark
-  instagram.com/HermannPark
-  twitter.com/HermannPark

Centennial Campaign Donor Wall



Don't miss your chance to be a part of Hermann Park's history! Join other Conservancy donors for a once-a-century recognition opportunity on the Centennial Campaign Donor Wall in Lake Plaza at Kinder Station. This special donor wall, which has been on temporary display since 2009,

consists of Conservancy donors whose cumulative giving for any purpose totals \$50,000 or more. Want to learn more about the donor wall or just how close you are to qualifying for listing?

Contact mmiller@hermannpark.org or **713-524-5876**, ext. **339**. *Deadline to be included on the wall is 12/31/15.*

Becky Naser –
In memory of Norma Shote O'Neill
Cindy and James Rhodes – In memory
of Sidney Raye Monroe Hamilton
Patrick Simmons –
In honor of Cathy Simmons
Lois Y. Taber –
In honor of Carolyn Robertson

Garden Conservancy Fund

\$1,000 – \$5,000
Anita Cannon Smith and
William James Smith
The Chistine and Jaime Yordan
Foundation

\$100 – \$500
Beverly and Oliver Pennington
Sally and Norman Reynolds –
In honor of Doreen Stoller
Barbara and Paul Schwartz –
In honor of Ann Kennedy
Anna Steinberger – In memory of
Dr. Emil Steinberger

Tree Conservancy Fund

\$500 – \$999
Steppie and Robert Holsclaw –
In memory of Mary Ann Phillips

Volunteer Programs

\$1,000 – \$4,999
CenterPoint Energy
NRG Energy, Inc.

In Kind

Carnegie Vanguard TPSP Project
Catherine and Ron Ehlinger
ExxonMobil Foundation

Urban Green

\$2,500 – \$4,999
John D. Woods, Jr.
\$1,000 – \$2,499
Norton Rose Fulbright
\$500 – \$999
Abraham, Watkins, Nichols, Sorrels,
Agosto & Friend
Brittany and Steven Douglas
Mariana Fishburn and Alessandro Torre
Brittany Sakowitz Kushner and
Kevin Kushner
Brittany Ringel
Lizzy Wermuth
Chris Westberry

\$100 – \$499
Michael Abney
Uzair Alaidroos
Ashley Berger
Andrew Bivona
Kathryn and Logan Boatman
Michael Broderick
Cole Buza
Shelby Collins
Natalie DeLuca
Bonnie and James Denham
Susan Dierker
Anne Eubank and Charles Brown

Ray Garcia
Elizabeth Geddes
Ericka and Garrett Graham
Gray Street Entertainment LLC
Sharon and Jason Griffin
Beth and Judd Harrison
Jessica Elizabeth Hart
Amy and Bo Huggins
Ryan Jennings
Christian Keller
Lynn Keller
Carey Kirkpatrick
Howard Anson Lang III
Lindsey Lechler
Ernest Lizcano
Cassie and John Milam
Patrick Moffitt
Stephanie and Lee Morris
NetWorth Realty
Mary and Weston O'Black
Anisha Patel
Staci and Ryan Pokorney
Camille and Andrew Pompei
Lauren and Michael Reeder
Liz and Anthony Referente
Amanda Rubenstein
Jamie Safier
Betty Salanic
Kim Scates
Laura Segatori
Kelly and Nicholas Silvers
Claudia Solis and
Matthew Wettergreen
Emily and Brandon Stein
Becky and Eric Swanson
Jeannine and Paul Vincent
Walton Henry Group, LLC
Mark Walton

In Kind
13 Celsius
Adair Kitchen
AJ's Landscaping
Andrew Richardson Photography
Ann Werme Group
Bagel Dots
Bayou Rum
Beirne, Maynard & Parsons, L.L.P.
Bella Madre
Bella Rinova Spa & Salon
Biscuit Home
BRC Gastropub
Butter & Company
Chick-fil-A
Chili's Grill and Bar
Clique Salon
David Peck USA
Deep Eddy Vodka
DEFINE Body & Mind
Deluxe Honeydrop Beverages
Dish Society
DJ Mav
DJ M-Cue
Down House
Dream Bouquet

Annie and Campbell Eifler
 Facade
 Four Seasons Hotel Houston
 Gallery Furniture
 Gigi's Cupcakes
 Gray Gardens Pantry
 Ham & Cheese Photobooth
 Hazen Jewelry
 Houston Ballet
 Houston Distributing Company, Inc.
 Houston Grand Opera
 Houston Symphony
 Jentry Kelley Cosmetics
 Judith's Little Sweets
 Kendra Scott
 KKBO-FM 92.9
 Lucky Strike Lanes and Lounge – Houston
 Merry Miller
 Mongoose versus Cobra
 Museum of Fine Arts, Houston
 Nails Unique
 Norris of Houston Salon & Day Spa
 Pappas Restaurants
 Paulie's Cookies
 Pax Americana
 Peran & Scannell Jewelry
 Prana Chai
 Relish Fine Foods
 Rosinka Wine and Tea House
 RYDE
 Saint Arnold Brewing Co.
 Siphon Coffee
 Ruth Smith
 Snap Kitchen
 Sprinkles Cupcakes
 Stones By Kate
 STYLINGBAR
 Texas Monthly
 Texas Whiskey
 The Hightower Collection
 The Houstonian Hotel, Club, and Spa
 Tony's
 True Food Kitchen
 Underbelly
 Whole Foods Market

Membership

Conductor's Circle (\$2,500+)

Abbi and Robert Antablin

Platinum (\$500 – \$2,499)

Roger D. Aksamit
 Anonymous
 Lee and Bob Ardell
 April Leath Barrick
 Karen and Charlie Baughn
 Harriet and Joe Foster
 Elizabeth A. Germani
 The Giralt-Rondon Family
 Clare A. Glassell
 Claire and Joseph Greenberg

Carol and Robert Hermes
 Peggy and Brad Holmes
 Dr. and Mrs. William W. Ishee, Jr.
 Marianne and Rob Jones
 Gwen Kunz
 John McKay
 Carol and Bob Miller – In honor of our 50th wedding anniversary
 Karen Shouse and Dennis Dunn
 Joel Sprott
 Sara and Craig Stone
 Marlene and Mark Wong
Gold (\$250 – \$499)
 Sean Andrews
 Shelby Baetz
 William Boyer
 Karen and C. E. Cantrell
 Frances and Oskar Cerbins
 Ginger Clarkson and Mark Ryan
 Connie and Bill Cox
 Katherine Shanks Dodd – In honor of Carol Price
 Linda M. Fahr and James D. Watson
 Carolyn and Ron Galfione
 Susan and Mike Garver
 Joan M. Giese
 Janet Haworth
 Elizabeth and Albert Kidd
 Jenny C. Ko
 David Krentz
 Quin D. Kroll, Jr.
 Sreedhar Mandayam
 John Middleton
 Midori and Jay Mochizuki
 Mulsanne Management
 Karol and Dan Musher
 Megan Oliphint
 Gay A. Roane
 Karin and Leo Shipman
 Mr. and Mrs. David Falconer Webber
 Pippa Wiley
 Lois and Steve Zamora

Centennial (\$100 – \$249)

Donna Adair
 Mary E. Ainslie
 Viki and Gary Anderson
 Anonymous (6)
 Madeleine and Michael Appel
 Sherry Applewhite
 Susie and David Askanase
 Julie Baker and Paul Heim
 Susan and Jeff Bell
 Cynthia Birdwell and Ian Laski
 Carolyn Bloomer
 Pam and Murray Brasseux
 Jessica Breitbeil
 Lindsey Brown
 Nancy F. Brown
 Katherine and Jason Buchanan
 Jane and Don Burney
 Margaret and John Burns
 Jereann Chaney

Sherri and Bill Chilivets
 Janet and Donald Collins
 Ellena P. Dickerson
 Judith and Frank Douglas
 Peggy and Bert DuPont
 Nan and Ed Earle
 Andrea and David Faulkinberry
 Marybeth and Tom Flaherty
 Lily and Charles Foster
 Paula and George Fowler
 Chris Frawley
 Rachel and O. Howard Frazier
 Lara Gaines and Family
 Lotty Gautschi
 Sara and Andrew Gladden
 Michael B. Good
 Wayne E. Gresham
 Lynn Guggolz
 Monica and Steven Heal
 Dorene and Frank Herzog
 Stacy and Scott Humphries
 Marjorie and Palmer Hutcheson
 Jerry Jeanmard
 Debbie and Frank Jones
 Dana and Neil Kelly
 Betty and Jim Key
 Diann and Mike Lewter
 Debra and Eric Lombardi – In honor of Brian P. Laporte
 Lynn Lovat
 Steve Lukingbeal
 Janet Lyon and Brent Jett
 Adah and Michael Mahon
 Anita and James Major
 Zaidurah Abd Manan
 Shannon and James Mann
 Deborah and Grant Martin
 Herman Martinez
 Wade Mayberry
 Janet and Pat McCollum
 Sharon and Errol McLaughlin
 Wendy McLaughlin
 Gayle and Jerry McMorrow
 Maria Modelska
 Cheryl F. Murray
 Elaine and Alan Mut
 Judy and Jim Nicklos
 Kathleen and David Ownby
 Nancy and Mark Picus
 Margaret and Michael Pierce
 Carl Pierleoni and Jesus Calderon
 Katherine and Michael Putnam
 Susan Raffle
 Fairfax and Risher Randall
 Marcia and Les Randall
 Heather and James Reardon
 Macey and Harry Reasoner
 Janet Redeker
 Anneka Roberson
 Jana and Harvey Rosenberg
 Sara Speer Selber
 Susan and Ed Septimus
 Len D. Slusser

Doris Snipp
 Adrienne and Will Stokes
 Donna and Robert Stokes
 Suzanne M. Struhall
 Linda and Dick Sylvan
 Jody Tandy
 Jennifer Taylor
 Susan and Leonard Teich
 Joe Termina
 Mardy and James Thomas
 Kris and Jeff Tinkham
 William Valentine
 Dr. and Mrs. Stuart Weil
 Lars White
 Susan Gail Wood
 Colby, Sonia, Alex and Julia Wright
 Sallie and Bob Wright

George Hermann Society

Genevieve Lykes Duncan†
 May Shelmire Duncan†
 Cece and Mack Fowler
 Steppie and Robert Holsclaw
 Ann Kennedy and Geoffrey Walker
 David Langworthy
 Jackie and Malcolm Mazow
 Laura and Brad McWilliams
 Terrylin G. Neale
 Mark B. Ryan
 Megan and Jason Ryan
 Doreen Stoller and Dan Piette
 John E. Walsh, Jr.
 Pippa Wiley
 †deceased

The George Hermann Society recognizes donors who have provided for the future of Hermann Park through bequests or life income gifts to Hermann Park Conservancy. The names listed above and on the preceding pages include donors who made gifts or pledges of \$100 or more between March 1 and June 30, 2015, as well as all George Hermann Society members. Gifts to the Park to Port Bike Ride will be recognized in a subsequent issue. In compliance with IRS standards, commitments paid over time in installments are recognized once in full at the time of the pledge. Please contact the Conservancy if we inadvertently have not included your name or if you would like to be listed differently in future publications.

contribute today!

Become a
Conservancy
member

Donate to
the Centennial
Campaign

Dedicate a
bench

Plant a tree

Join the
George Hermann
Society

Volunteer in
the Park

 Printed on recycled paper using soy-based ink

PARKSIDE / FALL 2015

board of directors

Chair
Danny David

Executive Committee
Jay Baker

Kristy J. Bradshaw
Russell D. Brightwell
Steve Dolman
Milane Duncan-Frantz
Cece Fowler

Brent Friedman
Linda C. Hunsaker
Ann Kennedy

Margaret L. Kripke, Ph.D.
Marley Lott

Rebecca Mark-Jusbasche
Terrylin G. Neale
H. Joe Nelson III
David Enrique Ruiz
Cassie B. Stinson
Phoebe Tudor
Keith Watson Wade

Board of Directors
Holly Alvis

Robert W. Antablin
David L. Benson
Devinder S. Bhatia, M.D.
John Bishop
Gloria Luna Bounds
Valerie Palmquist
Dieterich
Morgan Garvey
Gregg Hollenberg
Linda Kelly
David Rice Lummis
Ryan McCord
Anne C. Mendelsohn

Kunio Minami
Judy Nyquist
Robert C. Robbins, M.D.

Brian Rollins
Anne Schlumberger
Marcus Smith
Y. Ping Sun
Marvin Taylor
Troy Thacker

Ex-Officio
Joe Turner
Rick Dewees

Executive Director
Doreen Stoller

Advisory Board
Mickey Ables
Edward R. Allen III
Nancy Ames
Natalye Appel
Jana Arnoldy
Evans S. Attwell
Byron K. Barclay
Sadie Gwin Blackburn
Jane Block
Seth Borland
Kathleen A. Boyd
Gwen Bradford
Catherine Bradley
Ting Bresnahan
Richard L. Brooks
Divya Brown
Lindsey Brown
Kristen Buck
Donna Buja
Gracie Cavnar
Jackson Chang
Cheryl P. Chin, Ph.D.
Sanford W. Criner, Jr.
Jennifer Jodeit Daly

Davetta Daniels, Ed.D.
Lalo de Pilar
June Deadrick
Viviana Denechaud
Michael Dooley
Scott Dorfman, M.D.
Michael E. Easley
Lana C. Edwards, M.Ed.
Campbell Eifler
Charlene Taylor Evans
Valerie L. Fayle
Stephanie Fox
Ellie Francisco
J. Kent Friedman
Lissa Gangjee
Alice M. Gates, Ed.D.
Jennifer Gravenor
Christina Hanson
Leisa Holland-Nelson
Steppie F. Holsclaw
Barbara Hurwitz
Phillip John
Rosemarie Johnson
Demetra C. Jones
Margaret Justus
Christopher Lykes Knapp
Jenny C. Ko
David Krentz
Elyse Lanier
Sam L. Lasseter
Sarah A. Lee
David Leonard
Rashena Lindsay Flagg
Kathy Lord
Tommy Lott
Nancy Manderson
Jackie Wolens Mazow
Brew G. McKenna
Roslyn Bazzelle Mitchell
Melissa Mithoff
Kenneth A. Moffet
Vance Muse
Kathleen O'Reilly

Claudia E. Ortega-Hogue
Precious Williams
Owodunni
Roz Pactor
Gary Kenneth Porter
Mark T. Prescott
Carol S. Price
Dean Putterman
Glen Ragland
Chris J. Reichert
Shafik I. Rifaat
Carolyn Robertson
Michael E. Rome
Anna Rotman
Brittany A. Sakowitz
DeAndre Sam
Shavonnah Roberts
Schreiber
Karla A. Sepulveda
Louis Sklar
Ed Smith
Sebastien Solar
Claudia Solis
Harry L. Stille
Patrick Summers
Claire Thielke
Michele Thompson
Gary Tinterow
Sarah Pennington Tropoli
Kimberly A. Tutcher
Paul-David Van Atta
Maggie Beary Vermillion
Joe Weikerth
Phyllis Williams
L. Burke Windham III
Erin Collier Woolsey
Crystal Wright, M.D.
Elizabeth Satel Young
Susan Young

CONSERVANCY TEAM

Doreen Stoller, Executive Director
doreen@hermannpark.org

Linda Black, Venue Manager
lblack@hermannpark.org

Jane Curtis, Director of Horticulture
jcurtis@hermannpark.org

Barbara Jo Harwell, Conservation Director
barbara_jo@hermannpark.org

Mike Johnson, Project Manager
mjohnson@hermannpark.org

Diane Kerr, Director of Volunteer Programs
volunteer@hermannpark.org

Kristine Mall, Development Coordinator
kmall@hermannpark.org

Veronica Marisett, Accounting Manager
vmarisett@hermannpark.org

Meghan Miller, Director of Development
mmiller@hermannpark.org

Jean Miracle-Whitaker, Publications Manager
jmwhitaker@hermannpark.org

Ron Misrack, Director, Visitor Services
rmisrack@hermannpark.org

Cati Rines, Community Development Manager
crines@hermannpark.org

La Tonya Scott, Assistant Manager, Visitor Services
lscott@hermannpark.org

Derrick Whitfield, Manager, Pinewood Cafe
dwhitfield@hermannpark.org